

G3072 Series Diaphragm Pump

Last edited 8, June, 2018

Product Characteristic:

- Oil-less, maintenance free
- Long-life
- High air-tightness
- Quiet, less vibration
- Easy installation
- Pure transportation, sucking, compressing air/ gas/ vapour

Product Application:

- Medical apparatus and instruments
- Gas analysing
- Automation
- Battery power supply system



G3072 Series Diaphragm Pump



Performance Parameters

	Series Connection (vacuum)	Parallel Connection (vacuum)	Parallel Connection (pressure)
Flow rate	4.2 L/min	8.6 L/min	8.2L/min
Vacuum degree	90% (-90kPa)	72% (-72kPa)	
Max. pressure			120kPa (1.2bar)
Continuous vacuum	90% (-90kPa)	72% (-72kPa)	
Working pressure			100kPa (1bar)
Start vacuum	90% (-90kPa)	72% (-72kPa)	
Start pressure			120kPa (1.2bar)

Motor Parameters

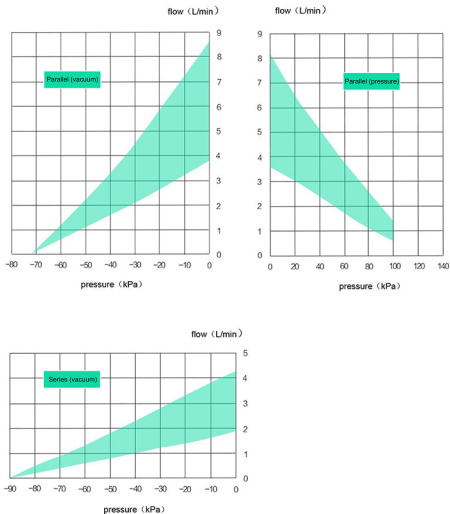
Voltage	12V/24V		
Rated speed	3400rpm		
Power	5W	5W	5W

Other Parameters

Pump head	PA
Diaphragm	EPDM
Valve plate	EPDM
Working ambient temp.	5℃~50℃
Working media temp.	5℃~50℃

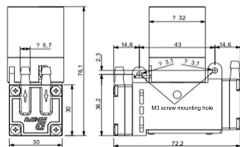
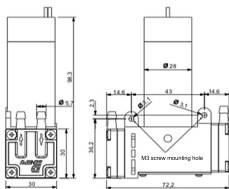
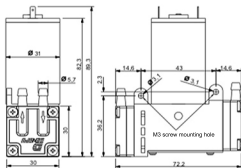
G | E | D | 12 | 90 | 403
 Air/gas | Motor type | Negative pressure | Flow rate
 Diaphragm material | Voltage

G	Air	B	DC brush motor
L	Liquid	B	DC brushless motor
E	EPDM diaphragm	BS	Adjustable dc brushless motor
F	FKM diaphragm	A	AC motor
6.6L/min ----- 606			
6L/min ----- 6			
0.6L/min ----- 06			

**Note:**

Above curves are the test result under 4m altitude and 24 °C temperature, under different altitude and temperature may have different results.

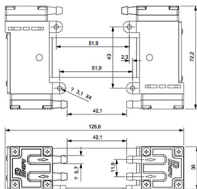
This drawing is a made according to PENGPU's testing data, only for reference. If any losses result from this drawing, PENGPU is not taking responsibility for it.



G3072 Series Diaphragm Pump



98kPa



Performance

Model	12V	GEBS2498406
	24V	GEBS2498406
Flow rate	4.6L/min (adjustable)	
Vacuum degree	98% (-98KPa)	
Max. pressure		
Continuous vacuum	98% (-98KPa)	
Working pressure		
Start vacuum	98% (-98KPa)	
Start pressure		

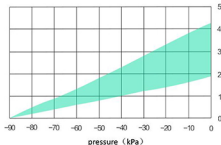
Other Parameters

Pump head	PA
Diaphragm	EPDM
Valve	EPDM
Working ambient temp.	5°C~50°C
Working media temp.	5°C~50°C
Weight	350g

Motor Parameters

Rated voltage	12V/24V
Rated current	1A/0.5A
Power	12W
Adjus range	1800~3500rpm

flow (L/min)



Note:

Above curves are the test result under 4m altitude and 24 °C temperature, under different altitude and temperature may have different results.

This drawing is a made according to PENGPU's testing data, only for reference. If any losses result from this drawing, PENGPU is not taking responsibility for it.

Two options of external drive

PWM speed adjust drive



Button type speed adjust drive



Red line	+	12V or 24V
Black line	-	
White line	SP speed adjust line	<p>Input 0-5V analog voltage 0~0.5V motor stay still 0.5~4.5V speed regulation interval 4.5~5V the fastest speed</p> <p>PWM suggest frequency 10KHZ-30KHZ; amplitude: 5v; duty cycle 0~10%: motor stay still; duty cycle 10~90%: speed adjust interval; duty cycle: 90~100% the fastest speed</p>
Yellow line	Feedback FG	FG speed feedback line connects to oscilloscope's probe or upper monitor, 1 pulse/circle

Notice: 1. when you don't need speed adjustment, black line goes to negative pole, whitelred line goes to positive pole, motor runs at high speed.
 2. Positive and negative pole of the motor is anti-reverse, so that it won't burn down when they are connected to the wrong pole.