

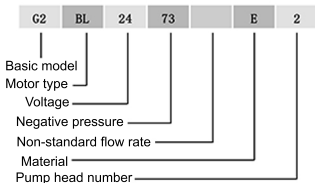
## G2 Series Diaphragm Air Pump

### Product Advantages

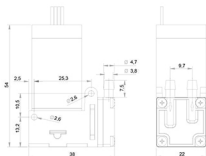
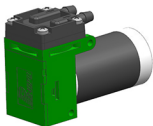
- Oil-less, maintenance free
- Long life
- High air tightness
- Quiet, less vibration
- Easy installation
- Small in size, big flow rate, high negative pressure

### Applications

- Medical equipment
- Environment protection equipment
- Lab
- Ink jet printer
- Industrial automation



# G2 Series Diaphragm Pump



pump head can be turned 360°

## Performance Parameters

Model	12V	G2BL1272E
	24V	G2BL2472E
Flow rate	2L/min (air)	
Vacuum degree	~72kPa	
Working pressure	80kPa	
Continuous vacuum	~72kPa	
Max. pressure	120kPa	
Start vacuum	~72kPa	
Start pressure	120kPa	

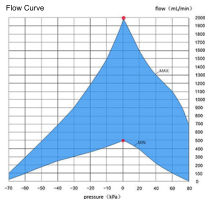
## Other Parameters

Pump head	PA
Diaphragm	EPDM
Valve plate	EPDM
Working ambient temp.	5°C~50°C
Working media temp.	5°C~50°C
Weight	72g

## Motor Parameters

Motor type	DC brushless motor
Life time	8000h
Rated voltage	12V/24V
Rated current	130mA/110mA
Power	1.6W/2.8W
Mechanical noise	<50dB
PWM speed adjust	1500-6000rpm
Humidity	0-90%RH

Flow Curve

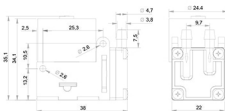
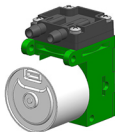


Note:

Above curves are the test result under 4m altitude and 24 °C temperature, under different altitude and temperature may have different results.  
This drawing is a made according to PENGPU's testing data, only for reference. If any losses result from this drawing, PENGPU is not taking responsibility for it.

Red line	connects +	
Black line	connects -	
White line	speed control SP	Input 0-5V analog voltage 0-0.5V motor stay still; 0.5-4.5V speed regulation interval 4.5-5V runs the fastest  PWM suggest frequency 10KHZ-30KHZ; amplitude 5V; duty cycle 0-10%: motor stay still; duty cycle 10-90%: speed adjust interval; duty cycle: 90-100% the fastest speed
Yellow line	Feedback FG	FG speed feedback line connects to oscilloscope's probe or upper monitor, 1 pulse/circle
Notice: 1. when you don't need speed adjustment, black line goes to negative pole, whitened line goes to positive pole, motor runs at high speed. 2. Positive and negative pole of the motor is anti-reverse, so that it won't burn down when they are connected to the wrong pole.		

# G2 Series Diaphragm Pump



pump head can be turned 360°

## Performance Parameters

Model	12V	G2ABL1272E
	24V	G2ABL2472E
Flow rate	2L/min(air)	
Vacuum degree	~72kPa	
Working pressure	80kPa	
Continuous vacuum	~72kPa	
Max. pressure	120kPa	
Start vacuum	~72kPa	
Start pressure	120kPa	

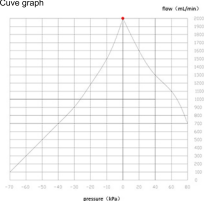
## Other Parameters

Pump head	PA
Diaphragm	EPDM
Valve plate	EPDM
Working ambient temp.	5°C~50°C
Working media temp.	5°C~50°C
Weight	44g

## Motor Parameters

Motor type	DC brushless motor
Life time	3000h
Rated voltage	12V/24V
Rated current	160mA/100mA
Power	1.9W/2.4W
Mechanical noise	<50dB
PWM speed regulation	1500-6000rpm
Humidity	0-90%RH

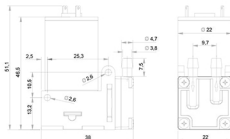
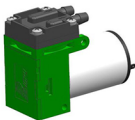
## Cuve graph



### Note:

Above curves are the test result under 4m altitude and 24 °C temperature, under different altitude and temperature may have different results.  
This drawing is made according to PENGPU's testing data, only for reference. If any losses result from this drawing, PENGPU is not taking responsibility for it.

# G2 Series Diaphragm Pump



pump head can be turned 360°

## Performance Parameters

Model	12V	G2DC1272E
	24V	G2DC2472E
Flow rate	2L/min (air)	
Vacuum degree	~72kPa	
Working pressure	80kPa	
Continuous vacuum	~72kPa	
Max. pressure	120kPa	
Start vacuum	~72kPa	
Start pressure	120kPa	

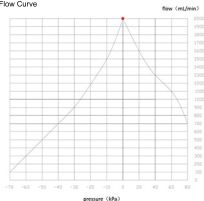
## Other Parameters

Pump head	PA
Diaphragm material	EPDM
Valve plate	EPDM
Working ambient temp.	5°C~50°C
Working media temp.	5°C~50°C
Weight	62g

## Motor Parameters

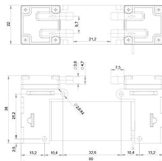
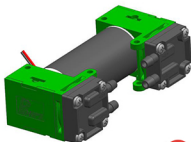
Motor type	DC brush motor
Life time	500h
Rated voltage	12V/24V
Rated current	160mA/100mA
Power	1.9W/2.4W
Mechanical noise	<55dB
PWM speed regulation	1500-6000rpm
Humidity	0-90%RH

## Flow Curve



Above curves are the test result under 4m altitude and 24 °C temperature, under different altitude and temperature may have different results. This drawing is a made according to PENGPU's testing data, only for reference. If any losses result from this drawing, PENGPU is not taking responsibility for it.

## G2 Series Diaphragm Pump



pump head can be turned 360°

### Performance Parameters

Model	12V	62BL1272E2
	24V	62BL2472E2
Flow rate	2L/min (80L/h)	
Vacuum degree	-90kPa	
Working pressure	_____	
Continuous vacuum	-90kPa	
Max. pressure	_____	
Start vacuum	-90kPa	
Start pressure	_____	

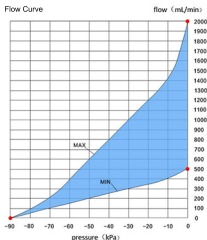
### Other Parameters

Pump head	PA
Diaphragm	EPDM
Valve plate	EPDM
Working ambient temp.	5°C~50°C
Working media temp.	5°C~50°C
Weight	126g

### Motor Parameters

Motor type	DC brushless motor
Life time	8000h
Rated voltage	12V/24V
Rated current	220mA/180mA
Power	2.7W/4.5W
Mechanical noise	<50dB
PWM speed regulation	1500-6000rpm
Humidity	0-90%RH

### Flow Curve



Abstract

Above curves are the test result under 4m altitude and 24 °C temperature, under different altitude and temperature may have different results.

This drawing is made according to PENGPU's testing data, only for reference. If any losses result from this drawing, PENGPU is not taking responsibility for it.